

Fusion Tote Series

Tote Mixers

Most Tote Mixers
SHIP NEXT BUSINESS DAY
 When ordered by 1:30pm EST

**BRIDGE MOUNT TOTE MIXER
 WITH OPTIONAL FORK
 CHANNELS AND VFD**



**CAP MOUNT
 TOTE MIXER**



**BRIDGE MOUNT
 TOTE MIXER WITH
 FOLDING IMPELLERS**

FEATURES AND BENEFITS:

- ✱ Fusion's tote mixers are versatile, light-weight, stable, and provide uniform mixing.
- ✱ Bridge Mount tote mixers offer an ultra robust platform for aggressive mixing. These attach across the top rails of cage style totes that are up to 52" wide, and can quickly and easily be moved from tote to tote.
- ✱ Cap Mount Tote mixers mount directly to a Schutz style 6" screw cap. Our tie rod mounting kit is included to provide additional stability.
- ✱ Industrial-duty TEFC electric motors are standard and are available in a variety of sizes, phases, and voltages chosen based on your need. Washdown duty and explosion proof motors are optional. Air motors are also available.
- ✱ Complete line of gearboxes and accessories provides a wide range of mixing speeds to suit your needs.
- ✱ Single or dual 316L stainless steel folding impellers or marine impellers are located on a 316L stainless steel shaft.
- ✱ All stainless steel versions and other impeller styles are also available. Custom tote mixers can be designed and built to your application's specification.



**TOTE STYLE FOLDING
 IMPELLERS DESIGNED FOR
 LIMITED-ACCESS VESSELS**

DESIGN INTENT

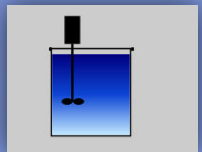
Fusion Tote mixers are designed for quick setup and enhanced portability while providing uniform tote mixing. Standard and custom designs are available to meet your needs.

EXAMPLE APPLICATIONS

- Industrial Tote Mixing & Blending
- Material Storage
- Chemical Tote Mixing
- Low or High Viscosity Batches
- Subtle or Aggressive Agitation
- Small Systems

SPECS

- Direct Drive: 1/2 - 5HP
1150-1750 RPM
- Gear Drive: 1/2 - 3HP
230-350 RPM
- Batch: 275 to 575 gallons
- Shaft Length: 36" FMB



Top Entry



www.fusionfluid.com